



**707 W. Grange Street * Philadelphia, PA 19120
800-523-0888 * Fax 215-927-3388**

**#17682
INLET COVER**

GENERAL DESCRIPTION

Our inlet cover is used for reducing the amount of silt and debris that may enter a storm water inlet near a construction, excavation, or remediation site and helps keep area in conformance with local and state conservation regulations. This product uses a dual layer of non-woven polypropylene filter geotextile. The water passes thru the fabric leaving the silt trapped in the geotextile layers.

FILTRATION MEDIA

Two layers of PA DOT Class 1 non-woven geotextile are used as the filtering medium. The class of geotextile has been specified by DOT in many filtration, drainage and separation applications. Geotextiles have a proven record for being effective, durable, and economical. Sediment deposits, which accumulated on the inlet mat geotextile, can be easily brushed or hosed off.

FEATURES

- * ECONOMICAL and ATTRACTIVE alternative to hay bales, stone, foam pads, screens, fabric bags
- * Quick, easy installation
- * Reusable, easily maintained
- * Low profile - will not impede vehicles or pedestrians
- * Durable - able to withstand traffic, adverse weather, temperature fluctuations, ultraviolet tolerant
- * Minimum storage area needed to stock, transport
- * Adaptable to curb or flat inlets

GEOTEXTILE PROPERTIES

PERMITIVITY	2.0 sec.	-1
TRAPEZOID TEAR STRENGTH	(ASTM D4533-85)	45lbs
APPARENT OPENING SIZE	US Standard sieve size	70
GRAB TENSILE/ELONGATION	(ASTM D4632-86)	50lbs
PUNCTURE	(ASTM D4833)	65 lbs
U.V. RESISTANCE	(ASTM D4355-84)	70%
MULLEN BURST	(ASTM D3786)	250 P.S.I.



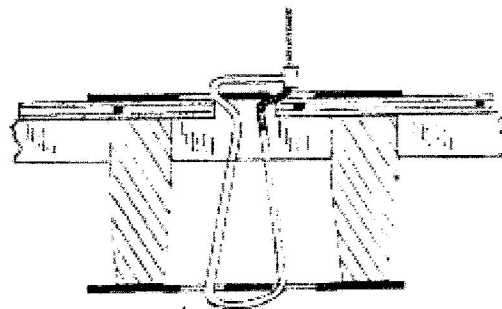
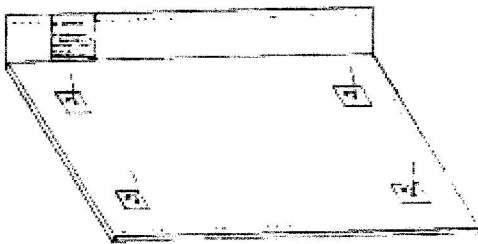
707 W. Grange Street * Philadelphia, PA 19120
800-523-0888 * Fax 215-927-3388

PROTECTOR INLET MAT MODEL #PRO-PA1 SPECIFICATIONS

Shall be manufactured in accordance with the following standards. An internal wire frame, 14 gauge 2" x 4" galvanized wire shall be covered with a geotextile layer on both sides of frame, forming an envelope. Geotextile will be sewn with a polymeric thread equal to geotextile properties. Brass grommets shall be applied for installation of attachment assembly (ies). Mats shall be fabricated for specific grate openings.

MAINTENANCE

Mats must be inspected and cleaned after precipitation (rain, snow, ice) occurs. Silt and debris, which has gathered in around or on mat, shall be removed with a broom, brush, or pressure water hose. Proper maintenance of mats will prevent clogging of inlet mat.



Attachment Detail